

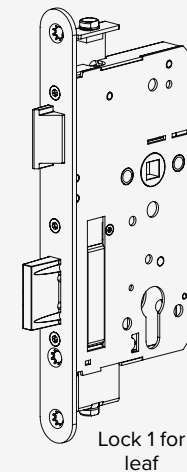
DINFIR3

Panic fire-rated
multipoint lock with rods

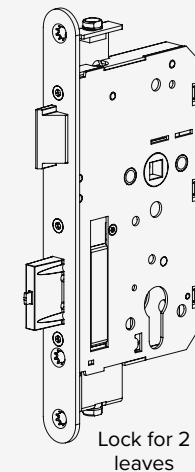


TECHNICAL CHARACTERISTICS:

- Centre distance 72 mm
- Bar shaft (two-point) 30, 45, 65 mm for locks with 65, 80, 100 mm backset sizes respectively
- Bar shaft (three-point) 19.5 mm (optional 25.5 mm)
- Bar travel 13 mm
- Connection for M6 bars
- Zinc plated steel lock casing and cover
- Nickel-plated sintered steel latch
- Nickel-plated zamak deadbolt
- 9 mm sintered steel handle set with 30° rotation
- 20 mm deadbolt, single throw
- Lock casing enclosed on all sides
- Compatible with Euro profile cylinder, with DIN cam

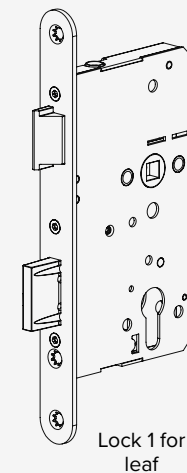


Lock 1 for
leaf

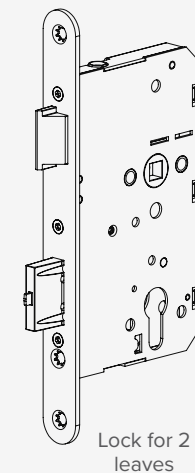


Lock 2 for
leaves

THREE-POINT



Lock 1 for
leaf



Lock 2 for
leaves

TWO-POINT

PRODUCT

Lock for 1 or 2 leaf fire / panic exit doors compliant with the DIN 18251, EN 1125 and EN 179 standards.

DINFIR3

Panic fire-rated
multipoint lock with rods

OPERATION

Operating the bars:

- The latch and the bars are directly linked
- The upper and lower bars are retracted when the latch is retracted and released when the latch is released

Interior side:

- The key operates the deadbolt
- The panic bar and/or handle always retract the latch and deadbolt

Outside:

- The key operates the deadbolt and retracts the latch (function E)
- The key operates the deadbolt and enables the handle (functions B, C and D)
- The handle retracts the latch (functions B, C, and D)
- Functions B, C, D, and E, outside:

Function E: Entry from the outside is only permitted with a key, which operates the latch and deadbolt (square spindle).

Function B: The exterior side handle is normally active. When the key is turned once, the outside handle is deactivated. When the key is turned twice, the door is securely locked. When opened from the inside using the panic bar, the outside handle is deactivated.

When the key is turned in the opening direction, the normal function of the outside handle is activated (split spindle).

Function C: The outside handle is normally inactive. When the key is turned, the outside handle is deactivated and the door is securely locked. When opened from the inside using the panic bar, the outside handle is deactivated.

When the key is turned in the opening direction, without the possibility of being extracted, the outside handle is active; when the key is extracted, the handle is deactivated and resumes its normal function (split spindle).

Function D: The exterior side handle is normally active.

When the key is turned, the outside handle is deactivated and the door is securely locked.

After the door is opened from the interior side using the panic bar function, the handle is active and functions normally (handle active/deactivated state is always linked to the deadbolt in/out state) (split square spindle).

STANDARDS

DIN 18251:2020-04
EN 1125:2008
EN 179:2008
DIN 107:1974-04

TEXT FOR SPECIFICATIONS

Locks compliant with DIN 18251, compliant with EN 1125 for panic doors with 3 latch points, and compliant with EN 179 for emergency doors. Series code 2DB3*, 2DC3*, 2DD3*, 2DE3*, 2DB2*, 2DC2*, 2DD2*, 2DE2* of DINFIR3 range, with casing and cover overlapping at the 3 connection points with the faceplate, rendering them extremely sturdy and, in particular, resistant to lateral forcing (break-in attempt).

DINFIR3

Panic fire-rated
multipoint lock with rods

RANGE

Three-point:

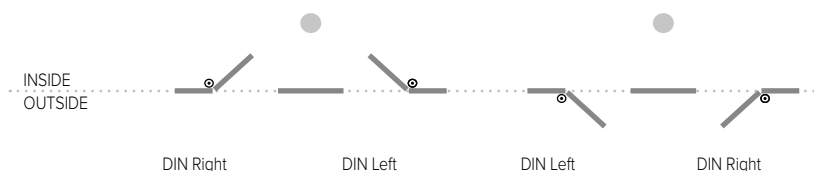
- Panic exit lock with 3 latch points for 1 or 2 leaf doors with latch and deadbolt, function B, series code 2DB3*
- Panic exit lock with 3 latch points for 1 or 2 leaf doors with latch and deadbolt, function C, series code 2DC3*
- Panic exit lock with 3 latch points for 1 or 2 leaf doors with latch and deadbolt, function D, series code 2DD3*
- Panic exit lock with 3 latch points for 1 or 2 leaf doors with latch and deadbolt, function E, series code 2DE3*

Two-point:

- Panic exit lock with 2 latch points for 1 or 2 leaf doors with latch and deadbolt, function B, series code 2DB2*
- Panic exit lock with 2 latch points for 1 or 2 leaf doors with latch and deadbolt, function C, series code 2DC2*
- Panic exit lock with 2 latch points for 1 or 2 leaf doors with latch and deadbolt, function D, series code 2DD2*
- Panic exit lock with 2 latch points for 1 or 2 leaf doors with latch and deadbolt, function E, series code 2DE2*
- Backset sizes 65, 80, 100, 2, and 100 mm for 1-leaf doors
- Round-cornered faceplate (square-cornered version optional)
- 24x3 mm faceplate (optional 20x3 mm)
- Zinc plated steel faceplate (also available painted RAL 7035 grey or in stainless steel)
- Reverse latch for inward opening emergency doors
- Right or left handed, in LH, compliant with DIN 107

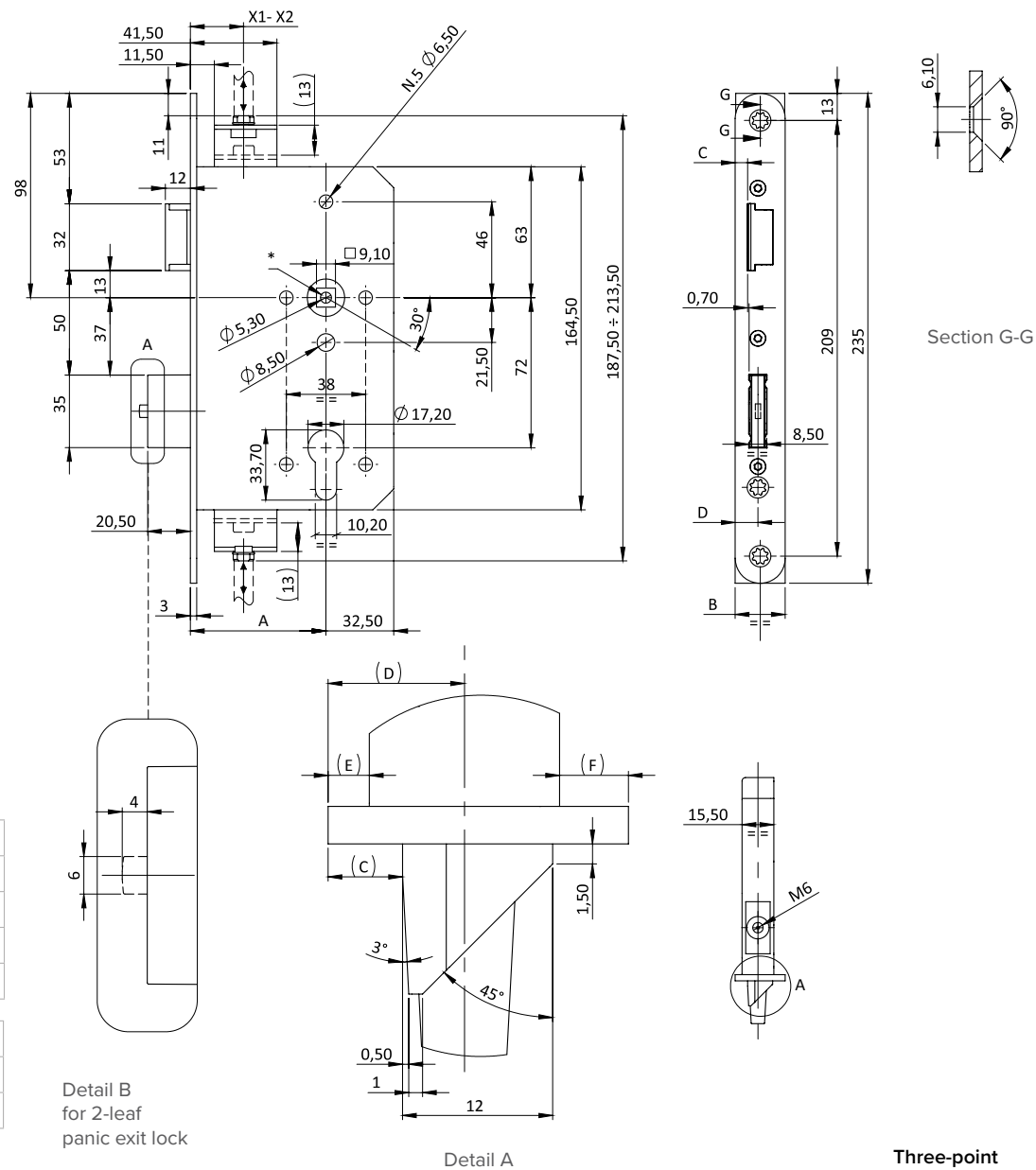
HIGHLIGHTS

- Locks compliant with DIN 18251, compliant with EN 1125 for panic doors and compliant with EN 179 for emergency doors
- With the 2-point and 3-point lock versions, the two and three latch points ensure better alignment between the door and frame (panic lock for 1-leaf door), or between the door and the passive leaf (lock for 2-leaf door), especially in case of large doors, resulting in better fire resistance performance
- Through-holes for fastening handle and cylinder escutcheons
- The lock casing and cover overlap in the 3 connection points with the faceplate, rendering the lock extremely sturdy especially resistance to lateral forcing (break-in attempts)
- The front panel can be unscrewed for replacement or a change of finish
- The range is highly modular - by switching the left/right handed configuration of the faceplate (by simply unscrewing) and reversing the latch, the left/right handed configuration of the lock is also switched



DINFIR3

Panic fire-rated
multipoint lock with rods



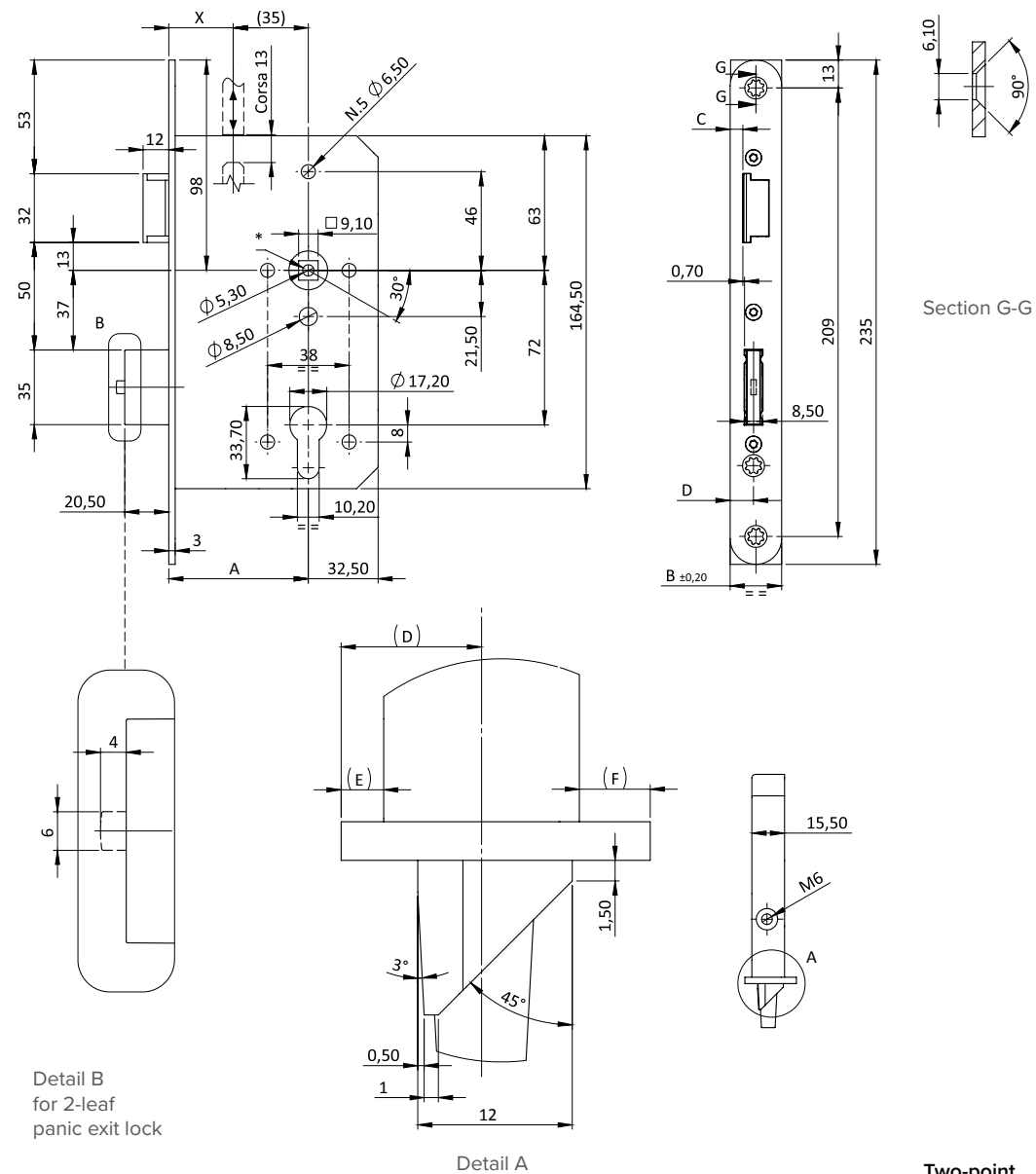
DINFIR3

Panic fire-rated
multipoint lock with rods



B	F	D	E	F
20	3.45	8.4	0.8	4
24	5.95	10.9	3.3	5.5

A	X
65	30
80	45
100	65



Two-point

DINFIR3

Panic fire-rated
multipoint lock with rods



Palmo Type A (series 949*)



Push Palmo Type B (series 944*)

For 1-leaf doors only Not suitable for 2-leaf configuration.



IDEA Base Mortise type A (series 94C*)

For 1-leaf doors only Not suitable for 2-leaf configuration.



Push Mortise type B (series 94F*)

For 1-leaf doors only Not suitable for 2-leaf configuration.



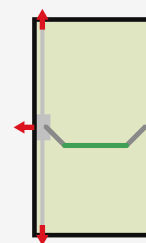
Lever handles
series 032*



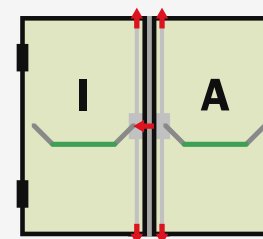
Pad Mortise
series 94G*

MATCHING ACCESSORIES

- 2D7* series counter-locks, for closing/opening the secondary leaf
- 24x3 mm flat strike plates (optional 20x3 mm)
- Zinc plated steel counter plates (also available in stainless steel)
- Different (screw fastened) faceplates allowing for different choices of finish
- Panic exit devices:
 - PALMO Type A (series 949*)
 - PUSH PALMO Type B (series 944*)
 - IDEA BASE Mortise type A (series 94C*)
 - PUSH Mortise type B (series 94F*)
- Emergency Exit Devices:
 - Lever handles series 032*
 - Mortise Pad series 94G*



Palmo	Type A (EN 1125)
Palmo-Palmo	Type B (EN 1125)
IDEA Base mortise	Type A (EN 1125)
Push-Mortise	Type B (EN 1125)
Pad Mortise	Type B (EN 179)
Lever handles	Type A (EN 179)



A ---> Primary leaf (active)
I ---> Secondary leaf (inactive)

Palmo	Type A (EN 1125)
Pad Mortise	Type B (EN 179)
Lever handles	Type A (EN 179)