

F900



PRODUCT

The F900 cylinder with protected duplicate keys and a magnet in the encryption row, considered by the highest certification bodies as one of the most unmissable copy protections, is a vertical locking system which is part of the CSF (Combined System Flat) product family. This family contains cylinders of different security levels, which can be combined with each other within a Masterkey system thanks to the same profiles.

The highest security level is the mechatronic cylinder F9000. The F900 cylinder is also available in different locking and keyed alike versions.

APPLICATION

The F900 with a large number of different mechanical profiles available, combines excellent potential for the creation of master key systems according to the security standards.

VERSION

Available in compact and modular design as:

- single profile cylinder
- double profile cylinder
- pre-arranged for knob
- knob cylinder

Available in compact design as:

- scandinavian type
- rim cylinder
- round cylinder
- lever round cylinder
- microswitch

TECHNICAL FEATURES

- Magnet in encryption coding row
- Cylinder body and plug made of brass in the standard version matt nickel-plated
- Suitable for installation in fire doors
- Encryption pins in stainless steel
- Counterpins in brass
- Springs in stainless steel
- Euro-profile cylinder (norm)
- Locking cam made of sintered steel
- Locking cam in min. 30° position (according to DIN)
- In each plug are 2 picking-resistant counterpins
- Each cylinder core contains 2 profile pins which interrogate the key lance
- The drilling protection consists of a hardened steel pin in the cylinder body
- Hardened Steel Strengthening Bar for increased snap and cylinder extraction resistance

F900

HIGHLIGHTS

- F900 has 6 pins in the inferior coding row, of which 5 are encryption pins, while in one chamber the magnet is collocated and up to 4 pins in the lateral coding row from a length of 30-30 made of wear-resistant special brass, per locking side
- The trademark protection is registered at the Patent and Trademark Office. The protected lettering GERA is located as a cross-section in the key profile
- A anti-pick protection is integrated in the profile cylinder
- The surface of the cylinder body is matt nickel-plated or brass as standard
- Three overlapping profile ribs of the plug increase the the security of the profile cylinder against unauthorised openings (paracentric key profile)
- The keys are made of nickel silver

Optionally selectable features:

- emergency and danger function
- free cam
- Anti-Amok function (slipping clutch for knob cylinder)
- conditional locking/classroom function
- special finishes: Bright gold, Gera bronze (for modular profile cylinders)

MATCHING PRODUCTS

IC-K4P (Transponder cap)

- CSF F9
- CSF F90
- CSF F99
- CSF F9000

STANDARDS

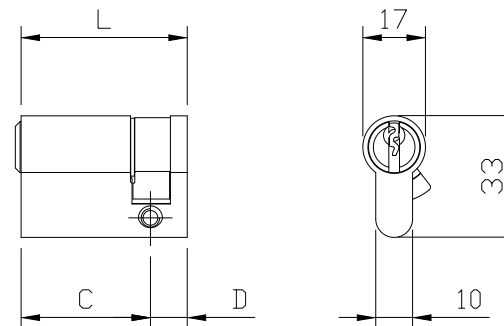
Compact and modular version:

DIN EN 1303: 2015-08

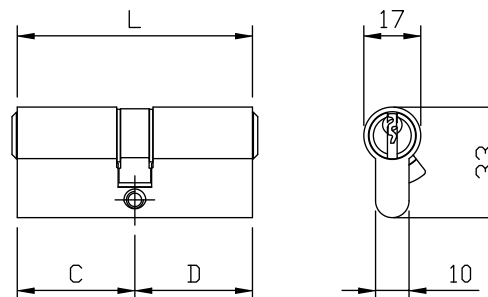
1 | 6 | 0 | B | 0 | C | 6 | D

SKG**

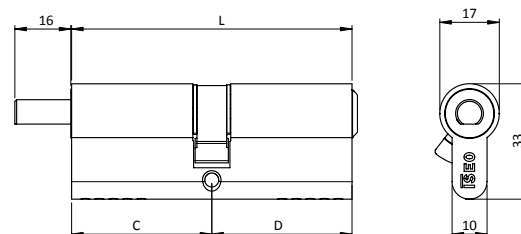
F900



Single profile cylinder



European double profile cylinder



Pre-arranged for knob