

# Pad INFILARE



## PRODUCT

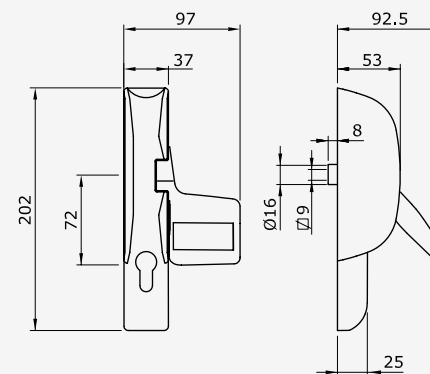
Panic device to be applied with control system for emergency exits.

## OPERATION

As laid down by Standard EN 179, emergency exit devices are designed to be used in places where panic situations are unlikely, but the people are aware of how to use the device. Standard EN 179 establishes the requisites that an emergency device must have in order to guarantee a safe and effective means of escape via a door that can be opened with a simple operation, even if this may require some familiarity with the device itself. The drive mechanism of the PAD mortise lock for fire doors, when used together with the relative locks and accessories, is designed to comply with the standard EN179 and offers excellent reliability, security and durability. The design of the devices has never compromised on style and aesthetics. The PAD mortise range has the same design characteristics as the rim application version, meaning that the two different products may be used in a single environment while maintaining a consistent appearance. In keeping with its attention to safety, ISEO has decided to add an AN-TIGERM treatment to its products. The effect of this antibacterial treatment is permanent, and does not require any special maintenance. The continuous release of silver ions guarantees constant effectiveness throughout the working life of the product, even if the surface is scratched. Subject to the application limits envisaged by current legislation, the Pad device treated with Antigerm is especially suitable for locations where hygiene and healthcare are basic necessities.

## TECHNICAL CHARACTERISTICS

- Usable together with mortise panic exit/fire door locks and counter-locks with 9 mm square spindle size, with 72 mm centre size and 30° square spindle rotation angle
- Can be combined with locks and DINFIR3 series panic/emergency mortise counter-locks with 9 mm handle set, 72 mm centres and 30° handle set rotation
- Durability: 200,000 cycles
- Door mass: up to 200kg
- Door dimensions:
  - maximum width up to 1500mm
  - maximum height up to 3400mm
- Resistance to corrosion: 240 hours in a saline environment
- Lever protrusion: less than 100 mm
- Lengths available: 811/1161 mm, may be shortened down to 330 mm
- Operating temperature: from -10°C to +60°C
- Colours available: black with red bar
- Anti-bacterial protection: AntiGerm on the painted versions.



# Pad INFILARE

## RANGE

A wide variety of accessories for panic and emergency fire-resistant doors is available.

## MAIN FUNCTIONS

Certified: CE marking in accordance with Regulation 305/2011 EC (CPR).

UKCA marking in accordance with Regulation 465/2019 UK.

Quick and easy to install.

Reversibility: possibility of both right-hand and left-hand configuration.

Adaptability, combinable with all Iseo fire-resistant panic / emergency locks and counter-locks and DINFIR3 series panic / emergency locks.

Configurable: installation on both single and double leaf doors.

Reliable: the entire range has been tested in accordance with the parameters required by the standard UNI EN179 (200,000 cycles).

Range: an extensive range of accessories for panic exit / fire door applications is available.

Finishes: black, metal grey, with ANTIGERM antibacterial treatment.

Controllable with the Aries electronic handle plate or with electric panic exit/fire door locks.

## STANDARDS

- CE marking in accordance with Regulation 305/2011 EC (CPR) in combination with Iseo locks and accessories

- UKCA marking in accordance with Regulation 465/2019 UK in combination with Iseo locks and accessories.

### EN179:2008

- Classification | 3 | 7 | 7 | B | 1 | 4 | 5 | 2 | B | A |  
in combination with locks series 212\*, 214\*, 2149\*

### EN179:2008

- Classification | 3 | 7 | 7 | B | 1 | 4 | 5 | 2 | B | A |  
in combination with DINFIR3 panic locks series 2D7\*, 2DB\*, 2DC\*, 2DD\*, 2DE\*

## MATCHING ACCESSORIES

- Aries electronic handle plate
- 0324\* and 0325\* series handle plates
- Locks series 212\*, 214\*, 2149\* and related accessories
- DINFIR3 panic locks series 2D7\*, 2DB\*, 2DC\*, 2DD\*, 2DE\* and accessories
- Square spindle 9479\*
- Accessories 03221\*4