

# R9



## PRODUCT

The CSR R9 cylinder is a reversible locking system which is part of the CSR product family. The R9 cylinder is available in different locking, keyed alike versions and masterkey systems.

## APPLICATION

The R9 with a large number of different mechanical profiles available, combines excellent potential for the creation of master key systems according to the security standards.

## VERSION

**Available in compact and modular design as:**

- single profile cylinder
- double profile cylinder
- pre-arranged for knob
- knob cylinder

**Available in compact design as:**

- scandinavian type
- rim cylinder
- round cylinder
- lever round cylinder
- microswitch

## TECHNICAL FEATURES

- Cylinder body and plug made of brass in the standard version matt nickel-plated
- Suitable for installation in fire doors
- Encryption pins in stainless steel
- Counterpins in brass
- Springs in stainless steel
- Euro-profile cylinder (norm)
- Locking cam made of sintered steel
- Locking cam in min. 30° position (according to DIN)
- In each plug are 2 picking-resistant counterpins
- The drilling protection consists of hardened steel pin in the cylinder body and plug
- Each cylinder core contains 2 profile pins which interrogate the key lance
- The drilling protection consists of a hardened steel pin in the cylinder body
- Hardened Steel Strengthening Bar for increased snap and cylinder extraction resistance

# R9

## HIGHLIGHTS

- R9 has 6 encryption pins in the inferior line and up to 4 pins in the lateral line from a length of 30-30 made of wear-resistant special brass, per locking side
- A drilling protection as well as anti-pick protection is integrated in the profile cylinder
- The surface of the cylinder body is matt nickel-plated or brass as standard
- The keys are made of nickel silver

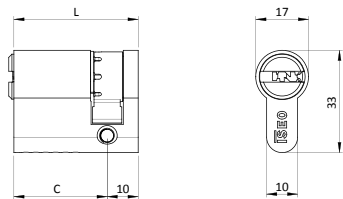
## Optionally selectable features:

- emergency and danger function
- free cam
- construction key

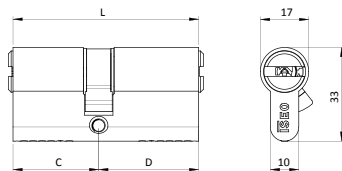
## STANDARDS

Compact and modular version:  
DIN EN 1303: 2015-08  
11610|B10|C15|D  
SKG\*\*  
BSI\*

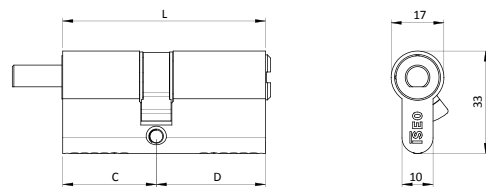
# R9



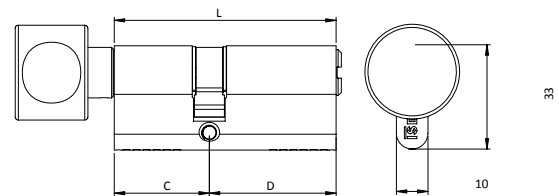
Single profile cylinder



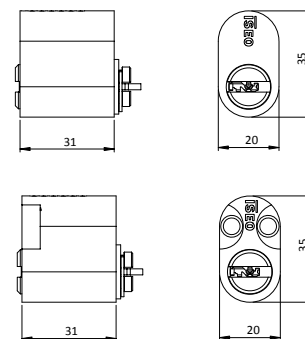
European double profile cylinder



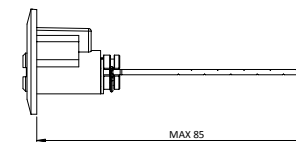
European double profile cylinder. Pre-arranged for knob



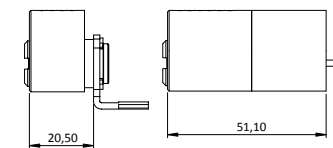
European double profile cylinder. Round knob



Oval scandinavian cylinder



Rim cylinder



Round cylinder