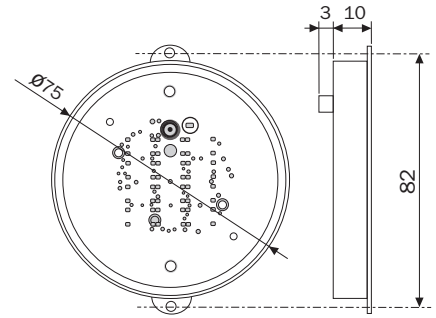


Iseo Serrature s.p.a
Via San Girolamo 13
25055 Pisogne (BS)
ITALY
Tel. +39 0364 8821
iseo@iseo.com

ELECTRONIC SUPPORT SERVICE

www.iseozero1.com

UM = mm



Documento non contrattuale. Soggetto a modifica. Cod. 6000098NB0696.3 - 26/11/2019.
x1R Smart Lettore Esterno Nascosto Guida Installazione (IT) - © 2019 Iseo Serrature S.p.a. - www.iseo.com

1. AVVERTENZE

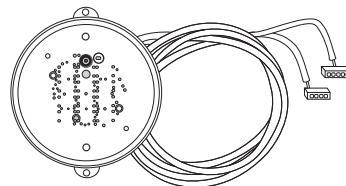


EC Declarations of conformity available at: iseo.com

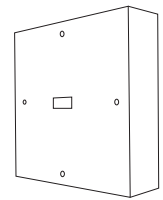
- Il **Letto**re Esterno Nascosto è composto dal lettore RFID e dal modulo radio Bluetooth. Entrambi sono montati all'interno di una scatola in plastica che deve essere installata ad una distanza massima, dal pannello esterno della porta, di 20mm. In questo modo, presentando una CARD ISEO al lettore nascosto, la distanza massima di lettura della card dal pannello esterno della porta, è circa 10mm. Per una buona esperienza utente è necessario conoscere il punto esatto di lettura sul pannello.
- Nel caso di porta blindata con pannello interno in metallo, il Lettore Esterno Nascosto può essere utilizzato all'interno di una ben definita scatola metallica, da saldare nel pannello in metallo, precedentemente tagliato della misura della scatola (vedi *Misure scatola lettore nascosto*). In questo ambiente il lettore RFID è stato testato e funziona correttamente con le CARD ISEO. I Transponder come **Keyfob, XKEY, Chipkey, causa le ridotte dimensioni dell'antenna interna, non sono compatibili.**
- Il Lettore Esterno Nascosto include un diottero che può essere utilizzato, facendo un foro sul pannello esterno della porta, per vedere le segnalazioni luminose (facoltativo).
- ISEO declina ogni responsabilità sul funzionamento del prodotto se installato senza l'utilizzo della *scatola lettore nascosto* o senza rispettare la distanza massima dal pannello esterno della porta. E' cura dell'installatore collaudare il prodotto, terminata l'installazione, per verificare il funzionamento, la qualità e la distanza di lettura.
- RFID: frequenza 13,553 - 13,567 MHz, massimo campo magnetico: - 5,7 dBµA/m (misurato a 3m alla massima potenza erogabile).
Radio: frequenza 2,40 - 2,4835 GHz, potenza massima: 5,2 mW

2. COMPONENTI

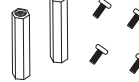
Lettore Esterno Nascosto con cavi di connessione



Scatola lettore nascosto



Set viti e distanziali

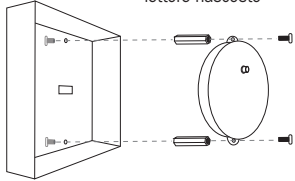


Non inclusa nel kit. Consulta il catalogo per il codice.

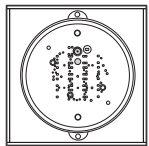
3. ASSEMBLAGGIO



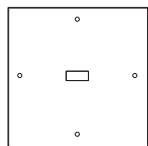
Saldare la scatola al pannello in metallo prima di montare il lettore nascosto



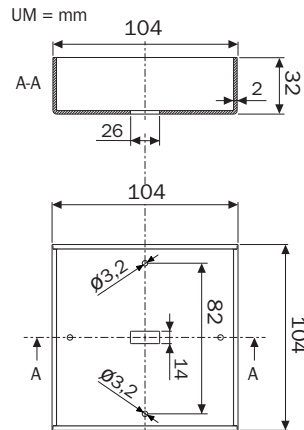
Vista fronte



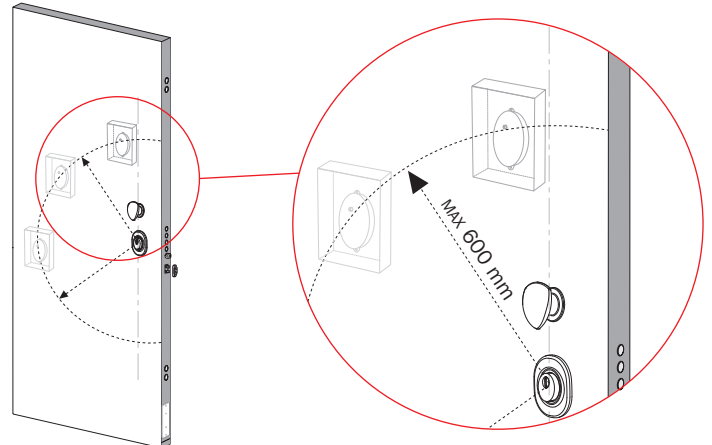
Vista dietro



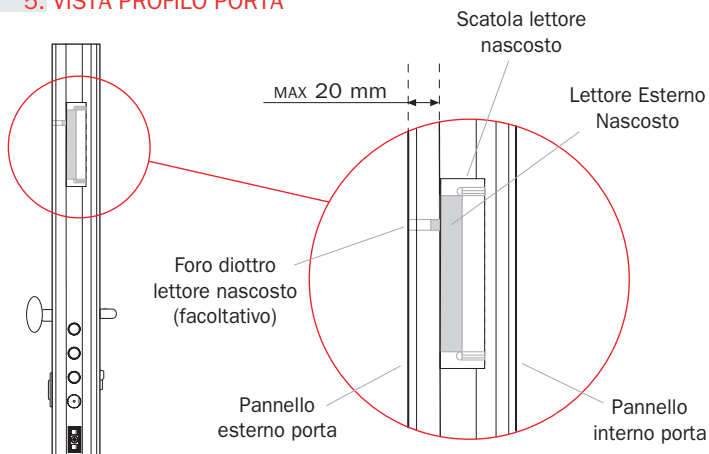
Misure scatola lettore nascosto



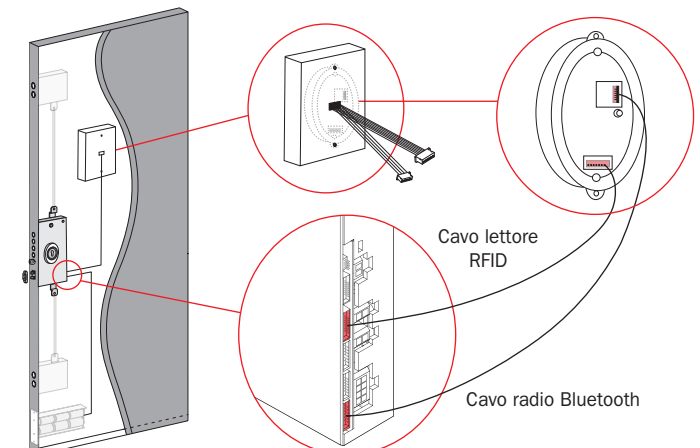
4. LATO ESTERNO PORTA

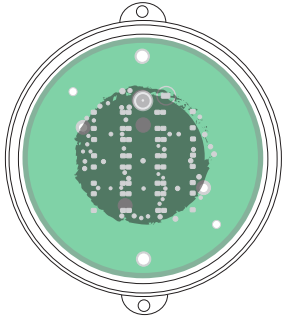


5. VISTA PROFILO PORTA



6. LATO INTERNO PORTA - CONNESSIONI ELETTRICHE

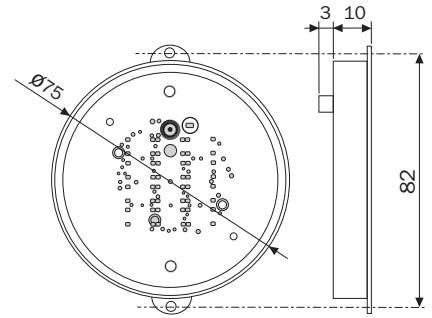




Iseo Serrature s.p.a
Via San Girolamo 13
25055 Pisogne (BS)
ITALY
Tel. +39 0364 8821
iseo@iseo.com

ELECTRONIC SUPPORT SERVICE
www.iseozero1.com

UM = mm



Non contractual document. Subject to change. Cod. 6000098NB0696.3 - 26/11/2019.
x1R Smart Hidden External Reader Installation Guide (EN) - © 2019 Iseo Serrature S.p.a. - www.iseo.com

1. WARNING

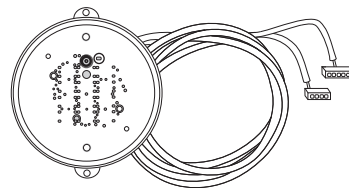


EC Declarations of conformity available at: iseo.com

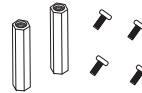
- The *Hidden External Reader* is composed by the *RFID reader* and the *Bluetooth radio module*. Both are fixed inside a plastic housing that need to be installed at a maximum distance, from the door external panel, of 20mm. In this way, presenting an *ISEO CARD* to the hidden reader, the maximum card reading distance, from the door external panel, is about 10mm. For a good user experience it is necessary to know the exact reading point on the panel.
- In case of armoured door with metal panel inside, the *Hidden External Reader* can be used inside a well defined metal box, to be welded in the metal panel, previously cut of the size of the box (see *Hidden reader box measures*). In this environment the *RFID reader* has been tested and correctly works with *ISEO CARDS*. **Transponder like Keyfob, XKEY, Chipkey, due to the small size of the internal antenna, are not compatible.**
- The *Hidden External Reader* includes a diopter that, making an hole in the door external panel, can be used to see the reader lights signals (optional).
- *ISEO* declines all responsibility for the operation of the product when installed without the use of the *Hidden reader box* or without comply the maximum distance from the door external panel. The installer, at the end of the installation, has to test the product to check the operation and the reading quality and distance.
- RFID: frequency 13,553 - 13,567 MHz, maximum magnetic field: - 5,7 dBµA/m (measured at 3m at the maximum power capacity).
Radio: frequency 2,40 - 2,4835 GHz, maximum power: 5,2 mW

2. COMPONENTS

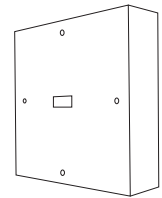
Hidden External Reader with connecting cables



Spacers and screws set



Hidden reader box

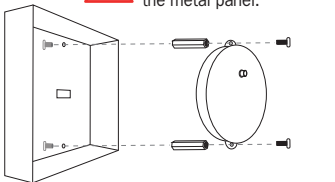


Not included in the kit.
See the catalogue for the code.

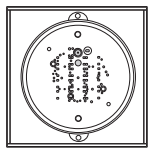
3. ASSEMBLING



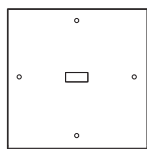
Before fixing the hidden reader, solder the box to the metal panel.



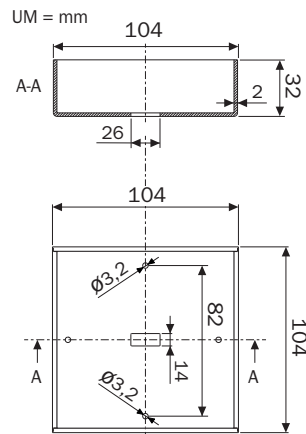
Front view



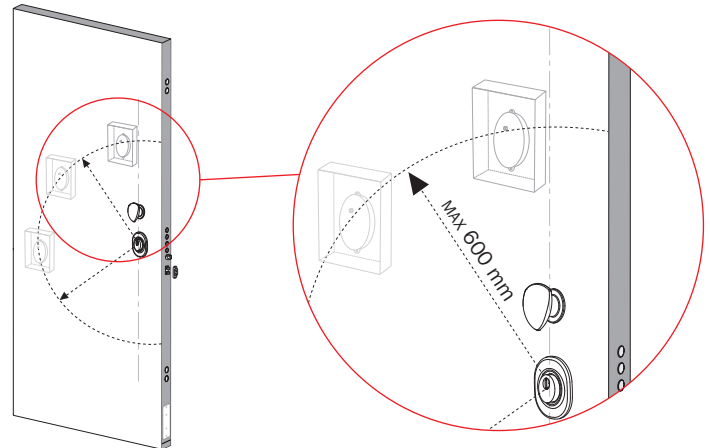
Rear view



Hidden reader box measures



4. DOOR EXTERNAL SIDE



5. DOOR PROFILE VIEW

Hidden reader box

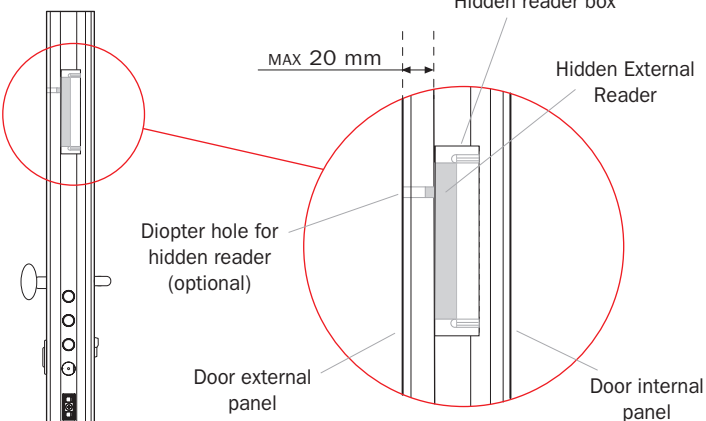
MAX 20 mm

Hidden External Reader

Diopter hole for hidden reader (optional)

Door external panel

Door internal panel



6. DOOR INTERNAL SIDE - ELECTRICAL CONNECTIONS

